



WinwinPay Staking & Revenue Model

Dual Income Stream Opportunity

www.winwinpay.co

Super App | Your Ultimate App for Global Payments

Introduction

The **WinwinPay (WWP) Revenue Model** offers an unparalleled opportunity to acquire WWP tokens, which are central to the platform's ecosystem. Currently, this **staking program is the only way to obtain WWP tokens**, making it an exclusive and limited opportunity. After 18 months, tokens will no longer be issued through staking, and future access will rely solely on purchasing from existing holders through secondary markets.

- Members participating in the program gain exclusive access to WWP tokens while benefiting from lucrative staking rewards. With a fixed monthly return of up to *11.81% and additional token releases, stakeholders enjoy **dual-income streams** that maximizes their financial potential. **The structured token reduction mechanism** ensures a controlled supply, enhancing both scarcity and the potential for **value appreciation over time**. Additionally, WWP tokens serve as gas fees, powering transactions and facilitating seamless operations within the WinwinPay platform, ensuring efficiency, scalability and a robust ecosystem for users.
- This program goes beyond simple staking by integrating a **comprehensive rewards structure** that includes referral bonuses, group bonuses and leadership bonuses. By participating in the WWP Staking Program, you position yourself at the forefront of a growing financial ecosystem while securing an **asset that is poised for long-term growth and utility**. We invite you to explore this opportunity to engage with an innovative and rewarding financial strategy that could significantly enhance your financial portfolio.

**Members are required to perform two daily tasks: Martingale Task and an App Engagement Task, to ensure an active platform with engaged users and qualify for the daily bonuses.*

Content

- 1.0. Member Ranking 3
- 2.0. Staking & Revenue Model
 - 2.1. Personal Staking 4
 - 2.1.1. Personal Staking Calculation Example 6
 - 2.2. Direct Sponsor 8
 - 2.2.1. Direct Sponsor Calculation Example 10
 - 2.3. Group Bonus 11
 - 2.3.1. Group Bonus Calculation Example 1 13
 - 2.3.2. Group Bonus Calculation Example 2 14
 - 2.4. Leader Bonus 15
 - 2.4.1. Leader Bonus Calculation Example 1 17
 - 2.4.2. Leader Bonus Calculation Example 2 18
- 3.0. Staking Token Reduction Mechanism 19
- 4.0. Comprehensive Staking & Revenue Model Overview 20
- 5.0. Wallet Overview 22
- 6.0. General Terms & Conditions 24

1.0 Member Ranking

The WWP Staking Program consists of **eight rank levels**, beginning with the initial rank, **Associate Member**, which is granted upon successful registration. This serves as the starting point for participants to embark on their WWP Growth Strategy Journey. The highest rank, **Polaris**, is an exclusive level attainable **by invitation only**. Below are the details of each rank and the criteria to attain them.

RANK	CRITERIA
ASSOCIATE MEMBER	Upon successful registration
MEMBER	Stake \$381 or directly refer 10 Members
GOLD	Achieve \$38,100 in Small Group Staking
PLATINUM	Achieve 3 GOLD Members in different branches; \$260,000 in Small Group Staking
SAPPHIRE	Achieve 3 PLATINUM Members in different branches; \$1,000,000 in Small Group Staking
EMERALD	Achieve 3 SAPPHIRE Members in different branches; \$6,000,000 in Small Group Staking
DIAMOND	Achieve 3 EMERALD Members in different branches; \$15,000,000 in Small Group Staking
POLARIS	By Invitation Only



PERSONAL STAKING

www.winwinpay.co

Super App | Your Ultimate App for Global Payments

One Staking, Dual Income Streams



You Stake:
\$10,000

Monthly
Income



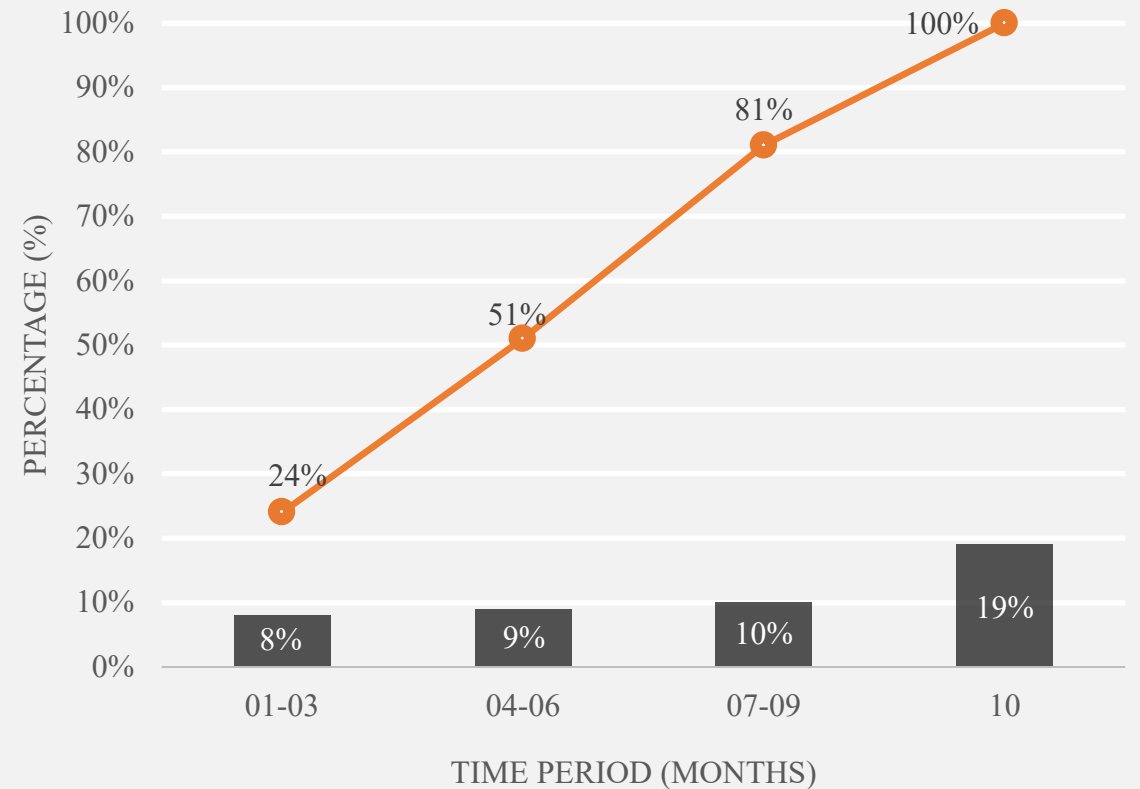
11.81%

Equivalent to
\$10,000 in WWP,
released over 10 months.



WWP Token Release Chart

Monthly Token Release Total Token Released



2.1.1 Personal Staking Calculation Example

- Stake Amount: **\$10,000**
- WWP price during staking: **\$0.10**
- Monthly ROI: **11.81%**

Income 1

Monthly USDT Income:

= \$10,000 * 11.81%

= **\$1,181**

Income 2

The total amount of WWP tokens you will receive:

= (\$10,000 / \$0.10) * 100%

= **100,000 tokens**

Income 2 Illustration Table

Month	Token Release %	Total Release Tokens	WWP Selling Price	Equivalent USDT
1	8%	8,000	\$0.10	\$800
2	8%	8,000	\$0.15	\$1,200
3	8%	8,000	\$0.20	\$1,600
4	9%	9,000	???	???
5	9%	9,000	???	???
6	9%	9,000	???	???
7	10%	10,000	???	???
8	10%	10,000	???	???
9	10%	10,000	???	???
10	19%	19,000	???	???

2.1.1 Personal Staking Calculation Example

- Stake Amount: **\$10,000**
- WWP price during staking: **\$0.10**
- Monthly ROI: **11.81%**

Income 2 Illustration Table

Month	USDT ROI	USDT Amount	Token Release %	WWP Selling Price	Equivalent USDT	Total Income (USDT)	ROI%
1	11.81%	\$1,181	8%	\$0.10	\$800	\$1,981	19.81%
2	11.81%	\$1,181	8%	\$0.15	\$1,200	\$2,381	23.81%
3	11.81%	\$1,181	8%	\$0.20	\$1,600	\$2,781	27.81%
4	11.81%	\$1,181	9%	???	???		
5	11.81%	\$1,181	9%	???	???		
6	11.81%	\$1,181	9%	???	???		
7	11.81%	\$1,181	10%	???	???		
8	11.81%	\$1,181	10%	???	???		
9	11.81%	\$1,181	10%	???	???		
10	11.81%	\$1,181	19%	???	???		



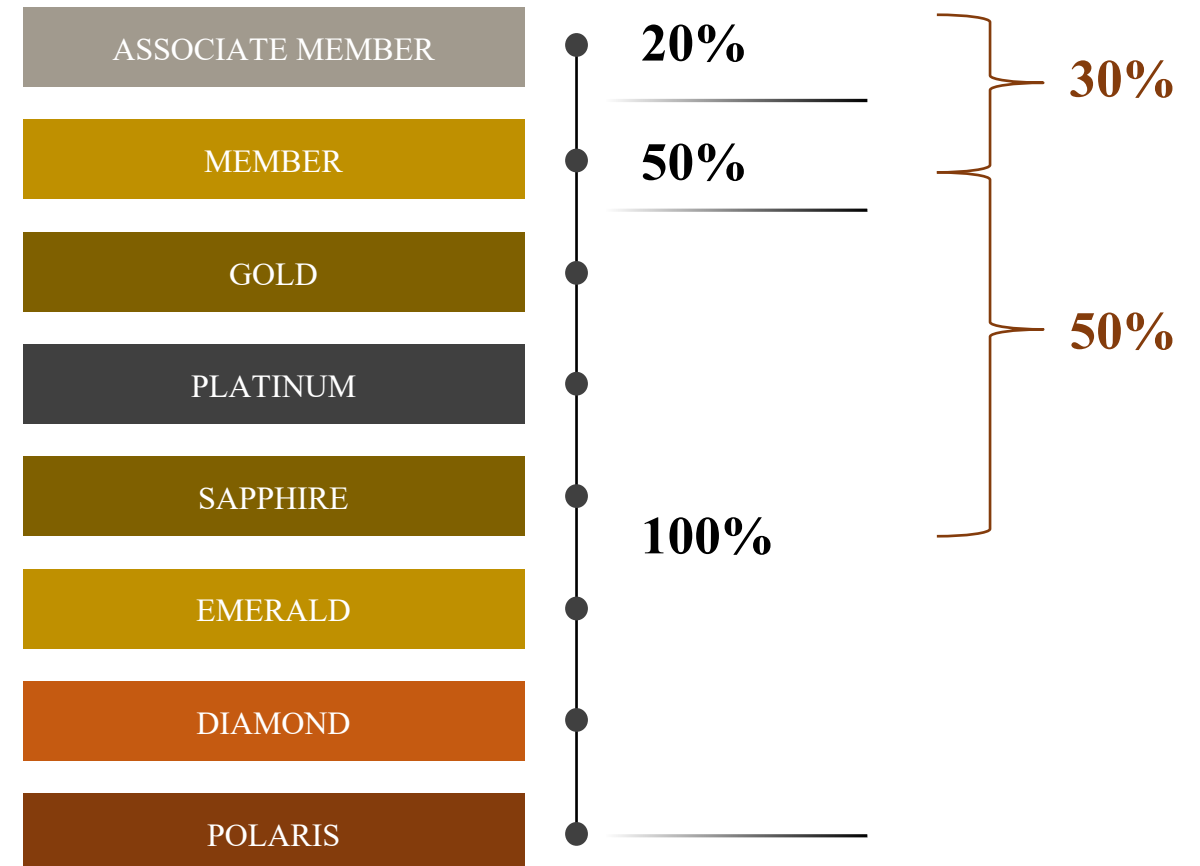
DIRECT SPONSOR

www.winwinpay.co

Super App | Your Ultimate App for Global Payments

2.2 Earn Up To 100% Of Your Referral's Staking Income

- The **WinwinPay Referral Program** allows you to earn up to 100% of your referral's staking income as you progress through the rank levels. Starting at 20% for Associate Members and reaching 100% at the Gold rank and above, the program rewards growth and participation.
- The rewards are based on a tiered difference calculation. For example, if you are eligible for 100% as a Platinum and your referral is eligible for 50% as a Member, you earn the difference of 50% (100% - 50%). This system ensures higher ranks unlock greater earning potential, making it a straightforward path to maximizing rewards.



2.2.1 Direct Sponsor Calculation Example



Your Rank: Associate Member (20%)

Direct Sponsor Total Staking: \$10,000

Your Direct Sponsor Income:

$$= \$10,000 * 11.81\% * 20\% = \$1,181 * 20\% = \mathbf{\$236.20}$$



Your Rank: Member (50%)

Direct Sponsor Total Staking: \$10,000

Your Direct Sponsor Income:

$$= \$10,000 * 11.81\% * 50\% = \$1,181 * 50\% = \mathbf{\$590.50}$$



Your Rank: Platinum (100%)

Direct Sponsor A Total Staking: \$10,000

A Rank: Member (50%)

A Direct Sponsor B Staking: \$5,000

Your Direct Sponsor Income:

$$\begin{aligned} &= (\$10,000 * 11.81\% * 100\%) + \\ &\quad (\$5,000 * 11.81\% * (100\% - 50\%)) \\ &= (\$1,181 * 100\%) + (\$590.50 * 50\%) \\ &= \$1,181 + \$295.25 \\ &= \mathbf{\$1,476.25} \end{aligned}$$



GROUP BONUS

www.winwinpay.co

Super App | Your Ultimate App for Global Payments

2.3 Group Bonus Rewards Structure:

- The **Group Bonus Rewards Structure** in WinwinPay lets participants earn both **USDT** and **WWP tokens** income from their team's performance. As participants progress through the ranks, their bonus percentages increase, starting with a 10% USDT Group Bonus at the Gold rank and going up to 50% at the Diamond rank.
- Additionally, higher ranks unlock more significant rewards, such as 40% WWP Tokens Group Bonus at the Diamond rank, emphasizing growth and team collaboration.

Earn USDT & WWP Tokens Income with Your Team

Rank	Group Bonus (USDT)	Same Level (USDT)	Over Level (USDT)	Group Bonus (WWP)
Associate Member	-	-	-	-
Member	-	-	-	*5%
Gold	10%	2% 2% 2%	3% 3% 3%	20%
Platinum	20%	2% 2% 2%	3% 3% 3%	25%
Sapphire	30%	2% 2% 2%	3% 3% 3%	30%
Emerald	40%	2% 2% 2%	3% 3% 3%	35%
Diamond	50%	2% 2% 2%	3% 3% 3%	40%
Polaris	By Invitation Only			

* Must directly refer at least 5 members

2.3.1 Group Bonus Calculation Example 1

- Your Rank: **Gold (10% USDT, 20% WWP)**
- Group Total Staking: **\$100,000**
- WWP price during staking: **\$0.10**

Income 1

Monthly Group Bonus USDT Income:

$$= \$100,000 * 11.81\% * 10\% = \$11,810 * 10\%$$

$$= \mathbf{\$1,181}$$

Income 2

The total amount of WWP tokens you will receive:

$$= (\$100,000 / \$0.10) * 20\% = 1,000,000 * 20\%$$

$$= \mathbf{200,000 \text{ tokens}}$$

Income 2 Illustration Table

Month	Token Release %	Total Release Tokens	Your Group Token (20%)	WWP Selling Price	Equivalent USDT
1	8%	80,000	16,000	\$0.10	\$1,600
2	8%	80,000	16,000	\$0.15	\$2,400
3	8%	80,000	16,000	\$0.20	\$3,200
4	9%	90,000	18,000	???	???
5	9%	90,000	18,000	???	???
6	9%	90,000	18,000	???	???
7	10%	100,000	20,000	???	???
8	10%	100,000	20,000	???	???
9	10%	100,000	20,000	???	???
10	19%	190,000	38,000	???	???

2.3.2 Group Bonus Calculation Example 2

- Your Rank: **Platinum (20% USDT, 25% WWP)**
- Your Team Rank: **Gold (10% USDT, 20% WWP)**
- Group Total Staking: **\$800,000**
- WWP price during staking: **\$0.10**

Income 1

Monthly Group Bonus USDT Income:

$$= (\$800,000 * 11.81\%) * (20\% - 10\%) = \$94,480 * 10\%$$

$$= \mathbf{\$9,448}$$

Income 2

The total amount of WWP tokens you will receive:

$$= (\$800,000 / \$0.10) * (25\% - 20\%) = 8,000,000 * 5\%$$

$$= \mathbf{400,000 \text{ tokens}}$$

Income 2 Illustration Table

Month	Token Release %	Total Release Tokens	Your Group Token (5%)	WWP Selling Price	Equivalent USDT
1	8%	640,000	32,000	\$0.10	\$3,200
2	8%	640,000	32,000	\$0.15	\$4,800
3	8%	640,000	32,000	\$0.20	\$6,400
4	9%	720,000	36,000	???	???
5	9%	720,000	36,000	???	???
6	9%	720,000	36,000	???	???
7	10%	800,000	40,000	???	???
8	10%	800,000	40,000	???	???
9	10%	800,000	40,000	???	???
10	19%	1,520,000	288,800	???	???



LEADER BONUS

www.winwinpay.co

Super App | Your Ultimate App for Global Payments

2.4 Leader Bonus Rewards Structure:

- The **Leader Bonus Rewards Structure in WinwinPay Staking Program** is designed to reward participants who demonstrate leadership by building and managing successful teams.
- Unlike the **Group Bonus**, this structure focuses on recognising leaders through tiered bonuses in both USDT and WWP tokens. Starting at the **Platinum rank with a 5% bonus**, leaders can progressively **earn up to 20% at the Diamond rank**, reflecting their influence and team performance. These bonuses incentivise leaders to not only grow their network but also cultivate high-performing teams, fostering a collaborative and thriving ecosystem.

Maximizing Team-Driven USDT & WWP Earnings

Rank	Leader Bonus (USDT)	Leader Bonus (WWP)
Associate Member	-	-
Member	-	-
Gold	-	-
Platinum	5%	5%
Sapphire	10%	10%
Emerald	15%	15%
Diamond	20%	20%
Polaris	By Invitation Only	

2.4.1 Leader Bonus Calculation Example 1

- Your Rank: **Platinum (5% USDT, 5% WWP)**
- Group Total Staking: **\$800,000**
- WWP price during staking: **\$0.10**

Income 1

Monthly Leader Bonus USDT Income:
 $= \$800,000 * 11.81\% * 5\% = \$94,480 * 5\%$
= \$4,724

Income 2

The total amount of WWP tokens you will receive:
 $= (\$800,000 / \$0.10) * 5\% = 8,000,000 * 5\%$
= 400,000 tokens

Income 2 Illustration Table

Month	Token Release %	Total Release Tokens	Your Group Tokens (5%)	WWP Selling Price	Equivalent USDT
1	8%	640,000	32,000	\$0.10	\$3,200
2	8%	640,000	32,000	\$0.15	\$4,800
3	8%	640,000	32,000	\$0.20	\$6,400
4	9%	720,000	36,000	???	???
5	9%	720,000	36,000	???	???
6	9%	720,000	36,000	???	???
7	10%	800,000	40,000	???	???
8	10%	800,000	40,000	???	???
9	10%	800,000	40,000	???	???
10	19%	1,520,000	288,800	???	???

2.4.2 Leader Bonus Calculation Example 2

- Your Rank: **Emerald (15% USDT, 15% WWP)**
- Your Team Rank: **Sapphire (10% USDT, 10% WWP)**
- Group Total Staking: **\$6,000,000**
- WWP price during staking: **\$0.10**

Income 1

Monthly Leader Bonus USDT Income:

$$= (\$6,000,000 * 11.81\%) * (15\% - 10\%) = \$708,600 * 5\% \\ = \mathbf{\$35,430}$$

Income 2

The total amount of WWP tokens you will receive:

$$= (\$6,000,000 / \$0.10) * (15\% - 10\%) = 60,000,000 * 5\% \\ = \mathbf{3,000,000 \text{ tokens}}$$

Income 2 Illustration Table

Month	Token Release %	Total Release Tokens	Your Group Tokens	WWP Selling Price	Equivalent USDT
1	8%	4,800,000	240	\$0.10	\$24,000
2	8%	4,800,000	240	\$0.15	\$36,000
3	8%	4,800,000	240	\$0.20	\$48,000
4	9%	5,400,000	270	???	???
5	9%	5,400,000	270	???	???
6	9%	5,400,000	270	???	???
7	10%	6,000,000	300	???	???
8	10%	6,000,000	300	???	???
9	10%	6,000,000	300	???	???
10	19%	11,400,000	570	???	???

STAKING TOKEN REDUCTION MECHANISM

EXAMPLE:

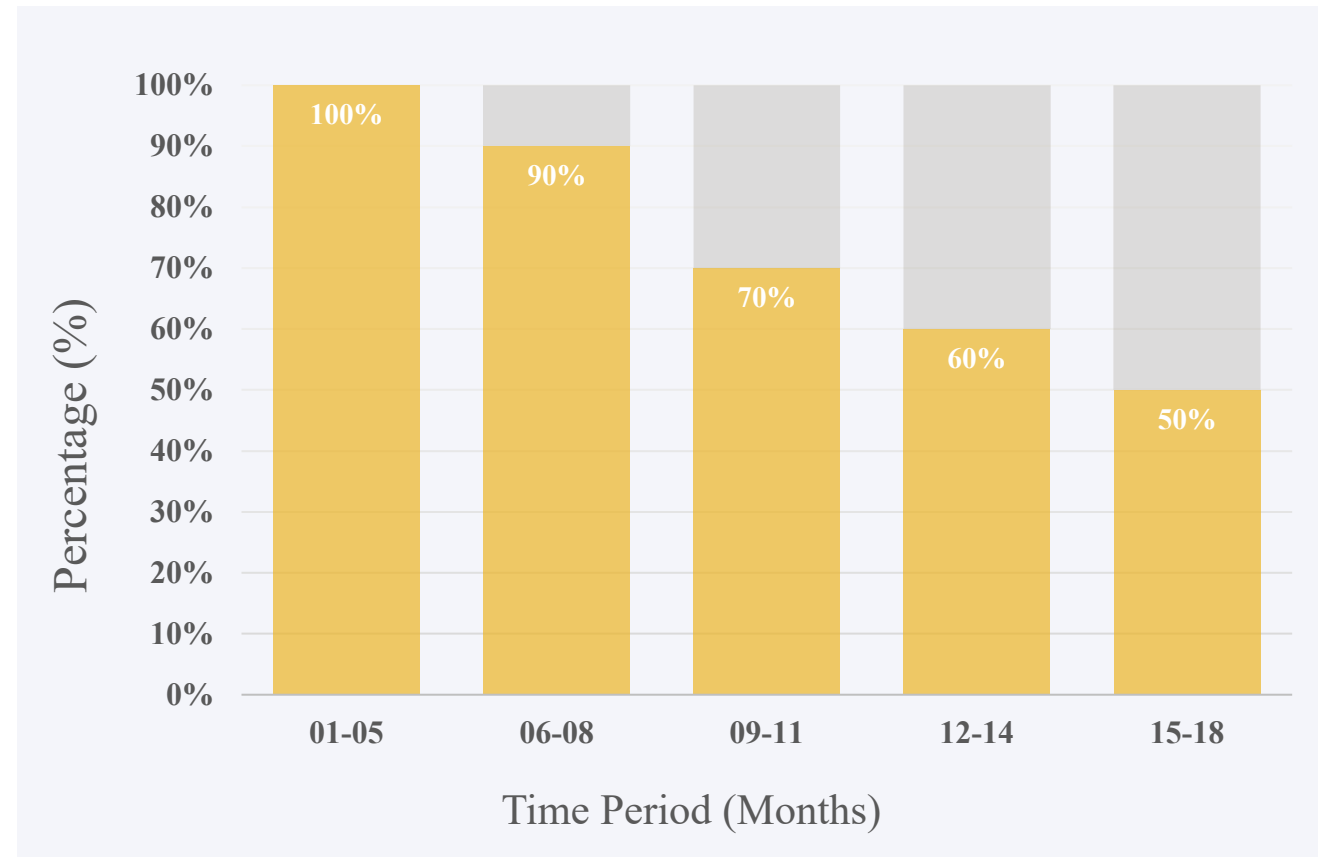
- Stake Amount: **\$10,000**
- WWP price during staking: **\$0.10**

WWP Pool Percentage: 100%

The total amount of WWP tokens you will receive:
 $= (\$10,000 / \$0.10) * 100\%$
= 100,000 tokens

WWP Pool Percentage: 70%

The total amount of WWP tokens you will receive:
 $= (\$10,000 / \$0.10) * 70\%$
= 70,000 tokens



COMPREHENSIVE STAKING & REVENUE MODEL OVERVIEW



ASSOCIATE MEMBER

Staking ROI:	N/A
Direct Sponsor:	20%
Group Bonus (USDT):	N/A
Group Bonus Same Level (USDT):	N/A
Group Bonus Over Level (USDT):	N/A
Group Bonus (WWP):	N/A
Leader Bonus (USDT):	N/A
Leader Bonus (WWP):	N/A



MEMBER

* Must directly refer at least 5 members

Staking ROI:	11.81%
Direct Sponsor:	50%
Group Bonus (USDT):	N/A
Group Bonus Same Level (USDT):	N/A
Group Bonus Over Level (USDT):	N/A
Group Bonus (WWP):	*5%
Leader Bonus (USDT):	N/A
Leader Bonus (WWP):	N/A



GOLD

Staking ROI:	11.81%
Direct Sponsor:	100%
Group Bonus (USDT):	10%
Group Bonus Same Level (USDT):	2% 2% 2%
Group Bonus Over Level (USDT):	3% 3% 3%
Group Bonus (WWP):	20%
Leader Bonus (USDT):	N/A
Leader Bonus (WWP):	N/A



PLATINUM

Staking ROI:	11.81%
Direct Sponsor:	100%
Group Bonus (USDT):	20%
Group Bonus Same Level (USDT):	2% 2% 2%
Group Bonus Over Level (USDT):	3% 3% 3%
Group Bonus (WWP):	25%
Leader Bonus (USDT):	5%
Leader Bonus (WWP):	5%

COMPREHENSIVE STAKING & REVENUE MODEL OVERVIEW



SAPPHIRE

Staking ROI: 11.81%

Direct Sponsor: 100%

Group Bonus (USDT): 30%

Group Bonus Same Level
(USDT): 2% | 2% | 2%

Group Bonus Over Level
(USDT): 3% | 3% | 3%

Group Bonus (WWP): 30%

Leader Bonus (USDT): 10%

Leader Bonus (WWP): 10%



EMERALD

Staking ROI: 11.81%

Direct Sponsor: 100%

Group Bonus (USDT): 40%

Group Bonus Same Level
(USDT): 2% | 2% | 2%

Group Bonus Over Level
(USDT): 3% | 3% | 3%

Group Bonus (WWP): 35%

Leader Bonus (USDT): 15%

Leader Bonus (WWP): 15%



DIAMOND

Staking ROI: 11.81%

Direct Sponsor: 100%

Group Bonus (USDT): 50%

Group Bonus Same Level
(USDT): 2% | 2% | 2%

Group Bonus Over Level
(USDT): 3% | 3% | 3%

Group Bonus (WWP): 40%

Leader Bonus (USDT): 20%

Leader Bonus (WWP): 20%



POLARIS

By Invitation Only



WALLET OVERVIEW



www.winwinpay.co

Super App | Your Ultimate App for Global Payments

YOUR WALLET TYPES EXPLAINED



USDT

The Platform's Deposit Wallet

This wallet is primarily designated for USDT deposits. Funds deposited into this wallet can be utilised for staking or seamlessly transferred to other wallet types.



USDT - BONUS

Earn and Manage Your Daily Rewards

Daily bonuses earned by members will be deposited into this wallet. These bonuses can also be used to purchase WWP tokens.



STAKING

Track and Manage Staked Amounts

This wallet reflects the member's active staked amount, which is used to calculate daily returns and serves as the basis for the Martingale staking strategy.



USDT - GAMES

Seamless Fund Transfers Across iGaming Platforms

This seamlessly integrated gaming wallet allows transfers from the USDT wallet, ensuring the smooth operation with the iGaming platforms.

WINWINPAY

Securely Store Your Earned WWP Tokensz

The WWP tokens earned by members will be stored in this wallet, serving as a dedicated repository for WWP tokens. Additionally, the tokens in this wallet will be used as the gas fees for all financial transactions on the platform.



GENERAL TERMS & CONDITIONS

1. Staking takes effect immediately upon activation, allowing members to begin earning daily income by completing the required Martingale tasks.
2. Each staking package is priced at \$381, and members can stake multiple packages, with a maximum of 10 packages per account.
3. Alternatively, members may choose to entrust the Martingale tasks to the company's professional team, earning a monthly bonus of 11% (compared to 11.81% for self-operated daily Martingale tasks).
4. Members must complete 2 daily tasks:
 - App Engagement Task: Daily In-App Rating
 - Daily Martingale Task (if not entrusted) on our iGaming partner platforms to qualify for their daily bonuses.Failure to do either, will result in no bonuses being awarded for that day.
5. If a staking package is terminated within 30 days, a 15% penalty fee will apply. After 30 days, no penalty fee will be applicable.
6. Upon termination, the funds will be immediately credited to the member's USDT wallet.
7. Terminating a staking package will incur a 2% gas fee, which will be automatically deducted from the member's WWP token wallet.
8. Members are allowed to use only the USDT-BONUS wallet to purchase WWP tokens.
9. The company assumes no responsibility for staking losses caused by members' failure to follow the Martingale strategy rules. To remain eligible for the WWP Staking & Revenue Model Program, members must replenish any incurred losses.



Thank You

www.winwinpay.co

Super App | Your Ultimate App for Global Payments